

THE BUG STOPS HERE!





Our Strategic Plan 2009 - 2012

HIGH QUALITY PATIENT CARE

- Safe**
Providing safe and effective care, based on evidence, to improve patient outcomes and satisfaction.
- Seamless**
Coordinating services in our hospital and beyond to ensure patients access timely, appropriate care.
- Seniors-Friendly**
Strengthening partnerships, expertise, and focus to improve care for our many patients who are seniors.



A GREAT PLACE TO WORK

- Healthy**
Creating a safe workplace together, reducing waste, and valuing wellness, to ensure a safe, positive environment.
- Connected**
Collaborating and communicating openly and proactively to improve decision making and job satisfaction.
- Inspired**
Investing in training and education to enhance careers, develop skills, and support mentors and preceptors.

A STRONG REGIONAL CENTRE

- Growing**
Pursuing our growth plan to deliver vital regional services and programming and the new facility's full potential.
- Efficient**
Controlling costs and improving processes together to ensure public trust, credibility and future support.
- Accountable**
Measuring performance, engaging the public, and reporting results to demonstrate progress on financial, quality, and safety targets.

www.prhc.on.ca

PRHC
Peterborough Regional
Health Centre
by your side

PRHC
Peterborough Regional
Health Centre
by your side

THE BUG STOPS HERE!



Dear Reader:

Thanks for picking up PRHC's first-ever comic book. *The Bug Stops Here!* is an innovative, city-wide effort to draw public attention to your hospital's ongoing efforts to fight deadly, so-called "superbugs" such as C. difficile, and to promote good hand hygiene.

Infectious diseases inside a hospital are a serious, worldwide issue. We all have a part to play. We hope this comic book catches your attention, but is educational and thought-provoking too.

A word of thanks...the story was developed by staff and physicians from PRHC including infection control leaders Margaret Jay and Dr. John Vlasschaert. On the creative side, we are grateful for the tireless work of David Taylor, and for Martin J. Murtonen's wonderful illustrations. To our sponsors who supported this project: thank you.

For more information on "The Bug Stops Here" comic book contact Communications at PRHC: 705-743-2121 ext. 5151

For more information on PRHC's Infection Control program contact: 705-743-2121 ext. 3906

Peterborough Regional Health Centre
1 Hospital Drive, W4664
Peterborough, ON K9J 7C6
(main) 705-743-2121
info@prhc.on.ca
www.prhc.on.ca

www.thebugstopshere.ca

STARRING:



SAMMY



NANCY, NURSE



VERONICA, INFECTION
CONTROL PRACTITIONER



MOM



GRANDMA



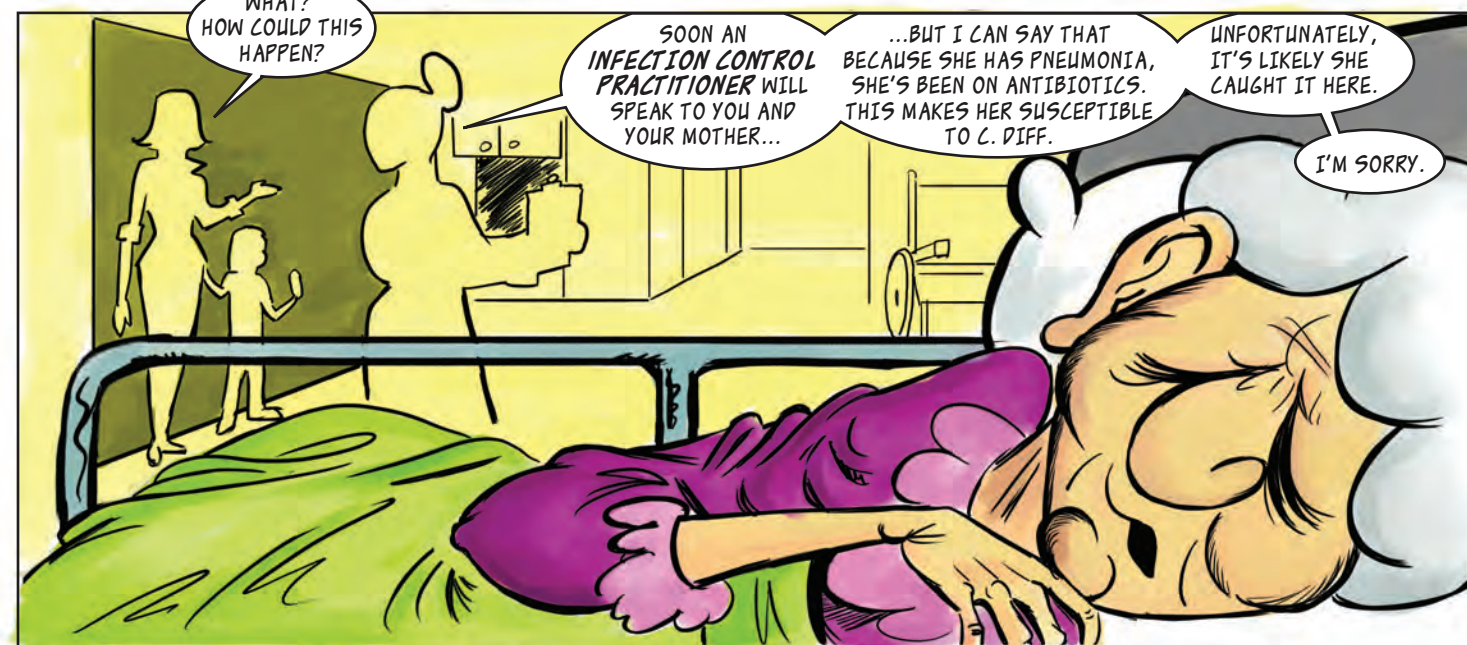
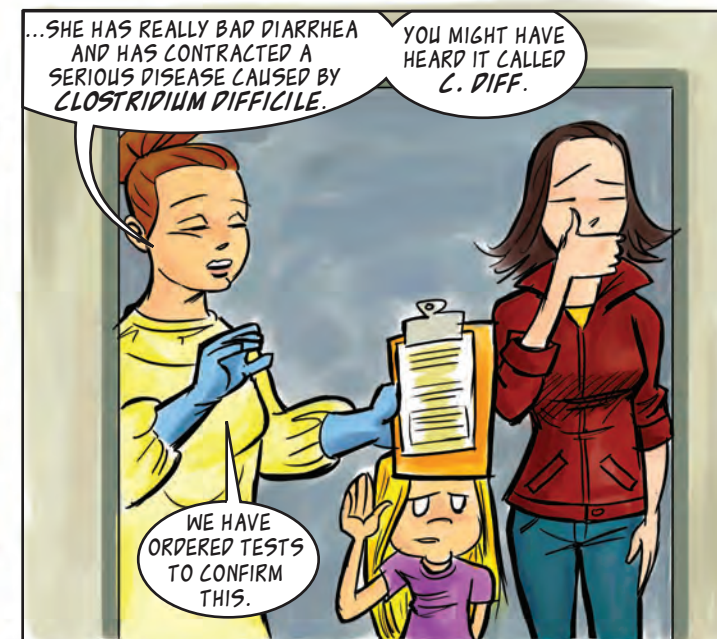
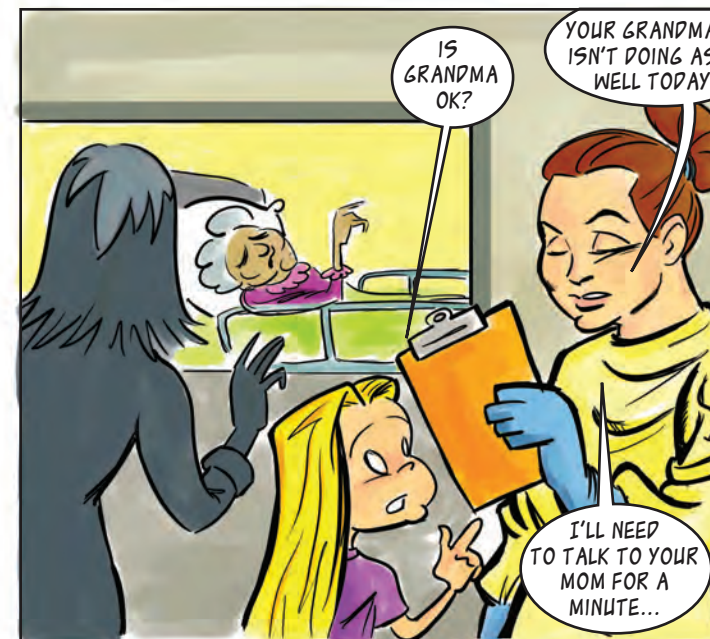
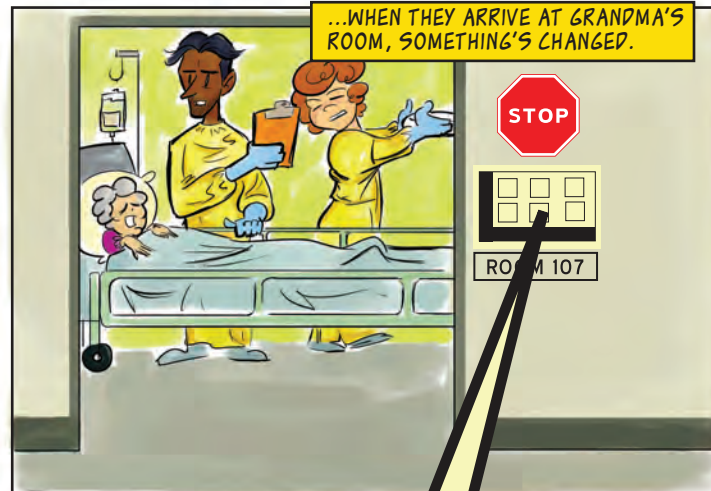
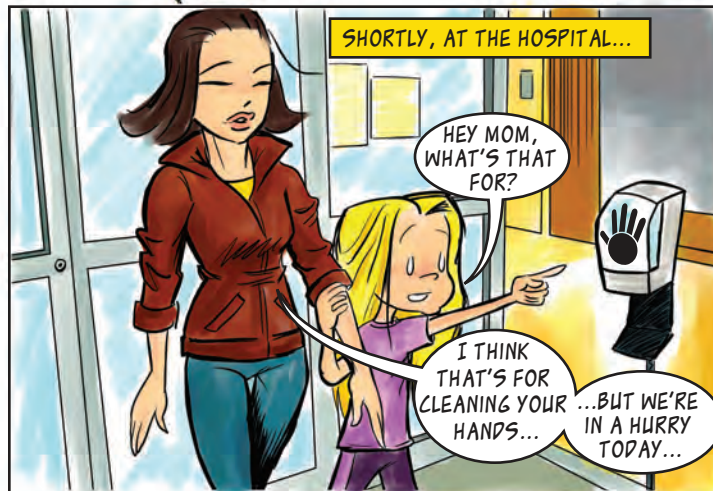
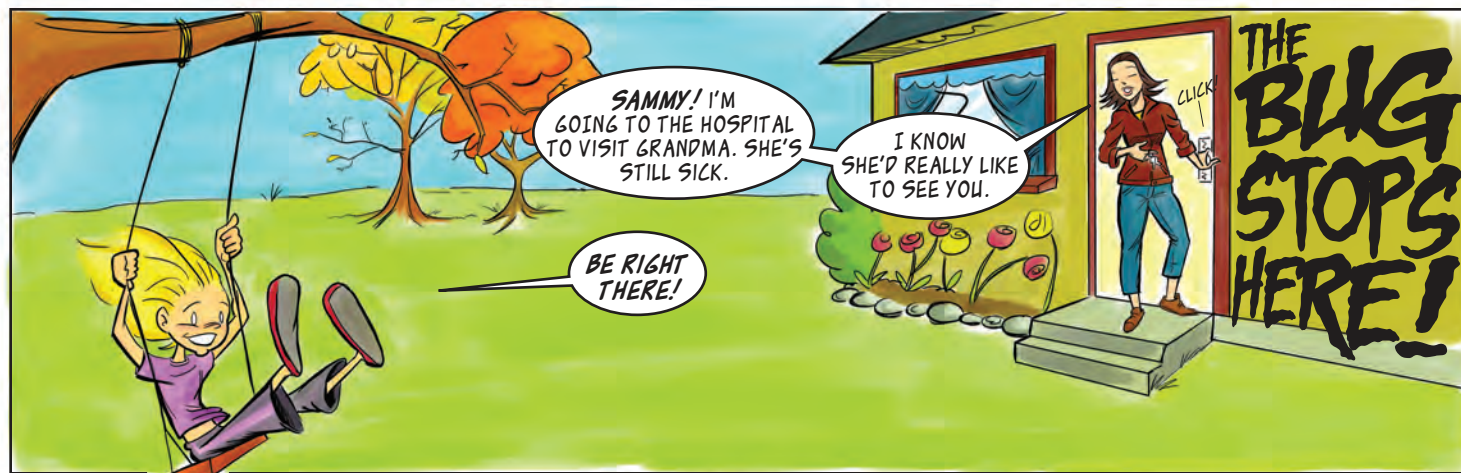
DR. SINGH



ANDY

THE BUG STOPS HERE©TM

The Bug Stops Here, Vol. 1, #1, September 2009. First printing. The Bug Stops Here logo and concept is TM and © 2009 by Cadillac Marketing & Communications Ltd. and iHorace media inc. Text © PRHC. PRHC does not endorse or support in any way products or services featured in its publications. All names and characters are entirely fictional. Any resemblance to actual persons (living or dead) is coincidental.



Contact Precautions



PATIENT PLACEMENT

- Maintain a distance of at least 2 metres (6 feet) between patients
- Door may remain open



GOWNS

- On entry into patient's room or bed space



GLOVES

- On entry into patient's room or bed space



DEDICATED EQUIPMENT

- Dedicate to this patient or disinfect after use



HAND HYGIENE

- Before initial patient / patient environment contact
- Before aseptic procedure
- After body fluid exposure risk
- After patient / patient environment contact



PATIENT TRANSPORT

- Transport for essential purposes only
- Notify receiving department

VISITORS

Please report to Nursing Station before entering the room



Visiting hours:

11 am - 2 pm & 5 pm - 8 pm

C. DIFF? TAKE DAT!

WITH AN INFECTION CONTROL PRACTITIONER



CLOSTRIDIUM DIFFICILE (OR C. DIFF) IS A BACTERIUM THAT PRODUCES A TOXIN THAT CAUSES DIARRHEA WHICH MAY LEAD TO MORE SERIOUS COMPLICATIONS.

SYMPTOMS OF C. DIFF MAY INCLUDE: WATERY DIARRHEA, FEVER, LOSS OF APPETITE, NAUSEA, ABDOMINAL PAIN OR TENDERNESS

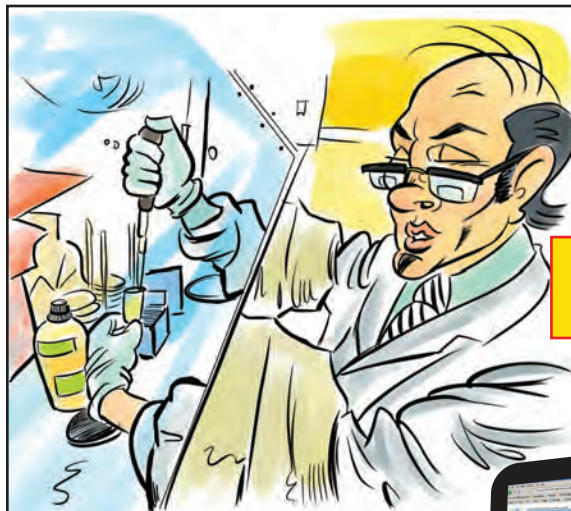
HEALTHY PEOPLE WHO ARE NOT TAKING ANTIBIOTICS ARE AT VERY LOW RISK OF GETTING THIS DISEASE.

PEOPLE WHO HAVE OTHER ILLNESSES OR CONDITIONS REQUIRING PROLONGED HOSPITAL STAYS AND THE USE OF ANTIBIOTICS ARE AT GREATER RISK OF ACQUIRING THE DISEASE.

C. DIFF CAN BE PART OF THE NORMAL BACTERIA THAT LIVE IN THE LARGE INTESTINE – **FOUND IN THE FECES.**

C. DIFF CAN BE TRANSMITTED BY PEOPLE'S HANDS AND THROUGH ENVIRONMENTS SURROUNDING INFECTED PATIENTS.

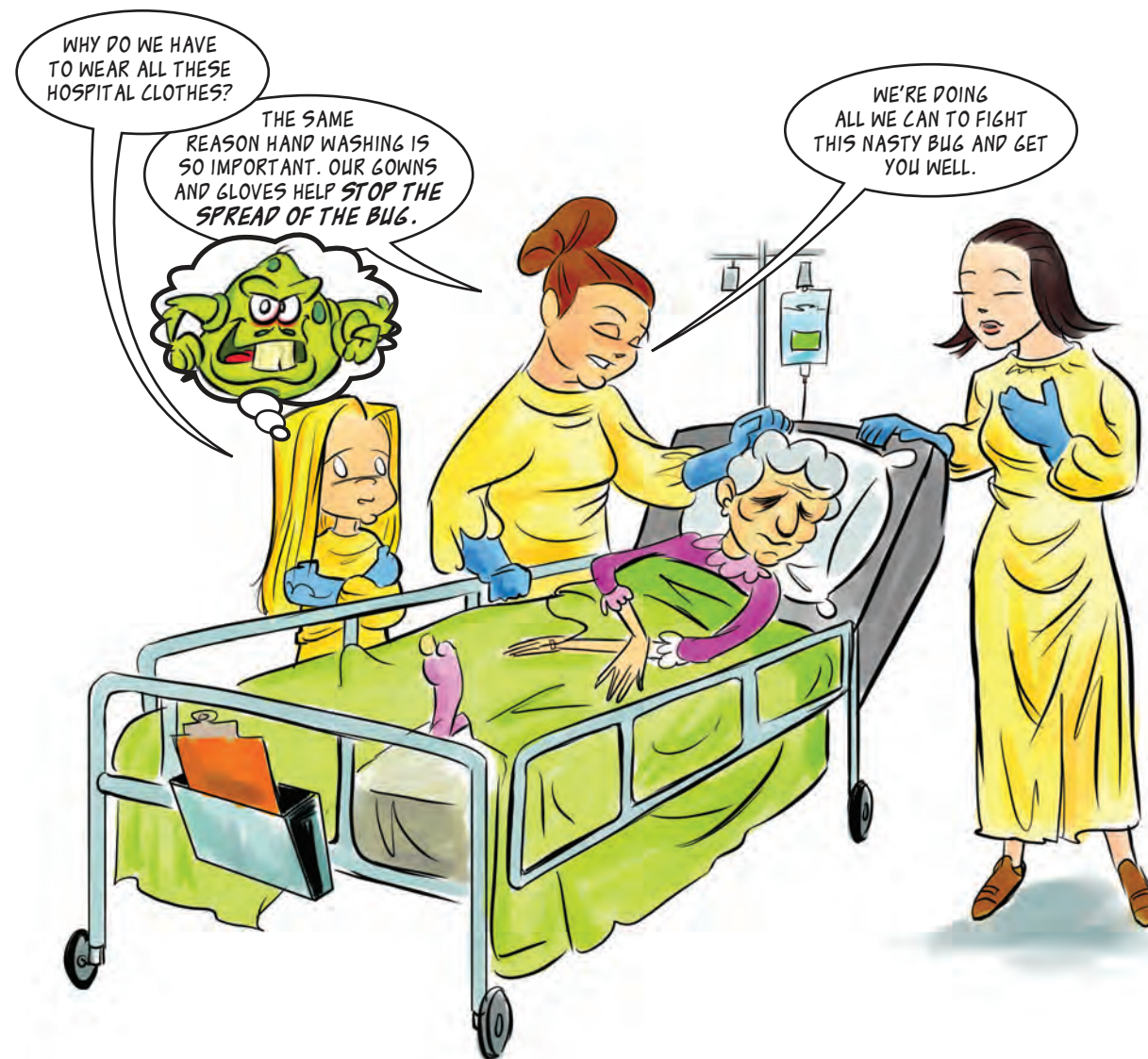
THE **BEST PROTECTION** AGAINST EVEN A **SMALL RISK** IS TO **WASH YOUR HANDS** AFTER VISITING SOMEONE WITH C. DIFF AND **FOLLOWING THE PROPER PRECAUTIONS.**



WHENEVER THERE IS SUSPICION OF C. DIFF SAMPLES ARE PREPARED QUICKLY FOR TOXIN TESTING.



WWW.PRHC.ON.CA GIVES RECENT STATISTICS FOR INFECTION CONTROL DATA - INCLUDING C. DIFF.



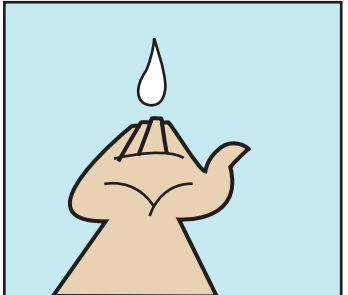
WHEN SHOULD I WASH MY HANDS?

1. WHENEVER YOUR HANDS BECOME OBVIOUSLY SOILED
2. AFTER USING THE TOILET
3. AFTER BLOWING YOUR NOSE, COVERING A SNEEZE ETC.
4. BEFORE EATING, DRINKING OR HANDLING FOOD
5. WHEN ENTERING THE HOSPITAL
6. AFTER LEAVING A PATIENT'S ROOM

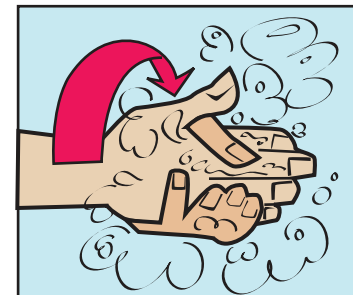
HOW TO WASH YOUR HANDS:



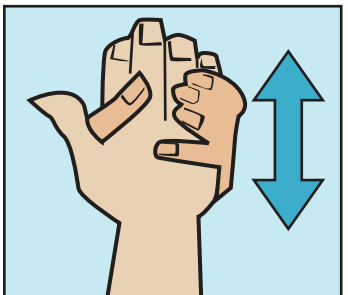
WET HANDS WITH WARM/COOL WATER BEFORE YOU ADD SOAP.



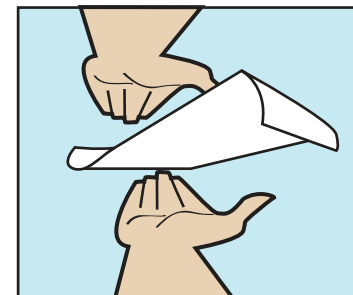
ONE SQUIRT OF SOAP IS ADEQUATE TO REMOVE GERMS AND CLEAN HANDS



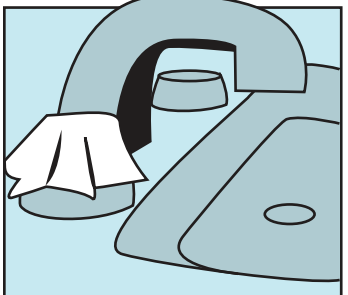
WORK SOAP INTO LATHER WITH FRICTION FOR 15 TO 30 SECONDS. DON'T FORGET THE BACKS, SIDES, THUMBS, WEBS AND NAIL BEDS OF YOUR HANDS.



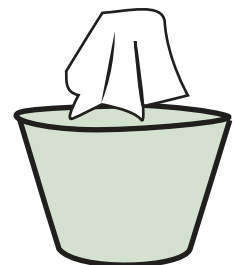
CONTINUE TO USE FRICTION WITH RINSING SOAP.



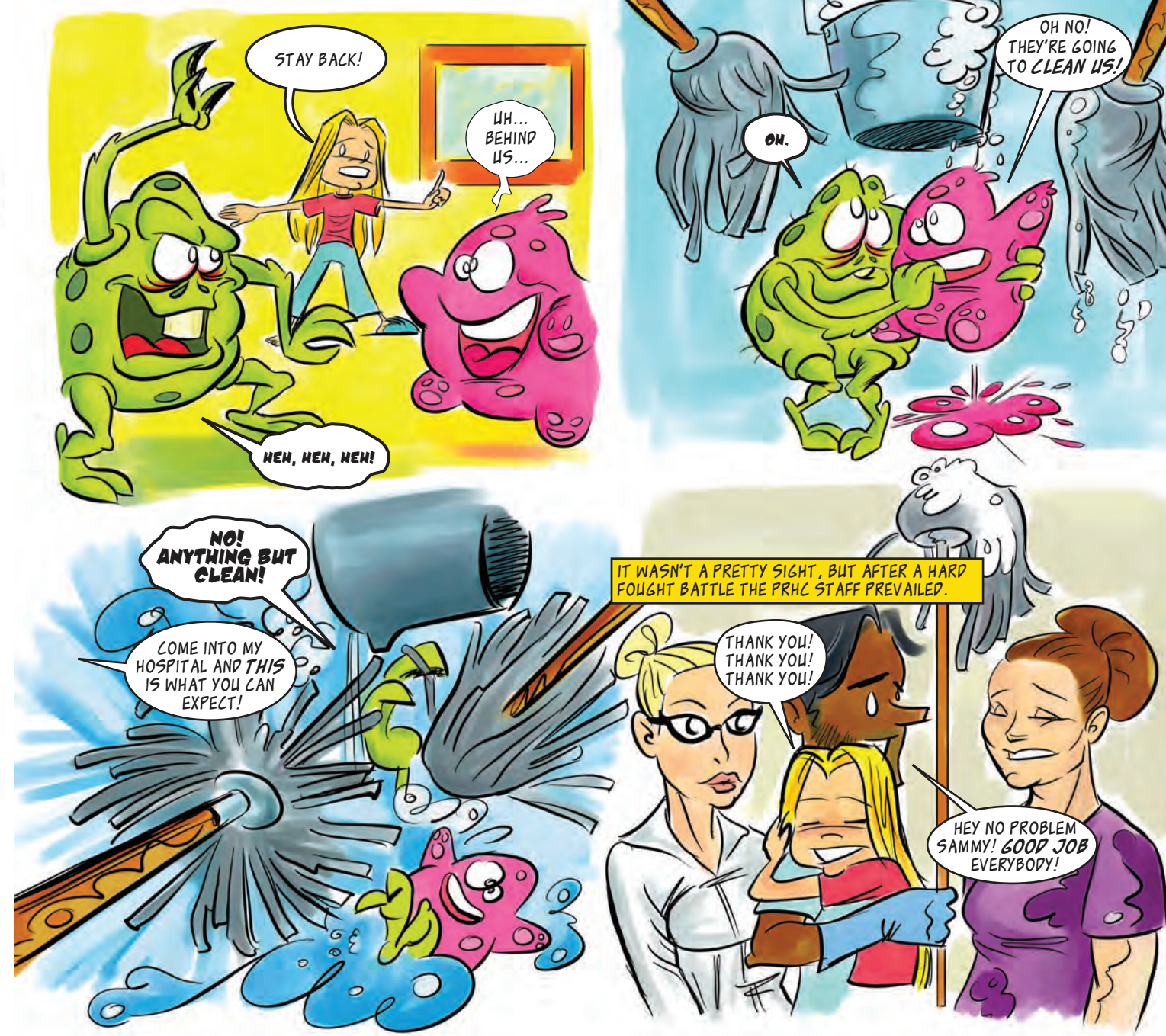
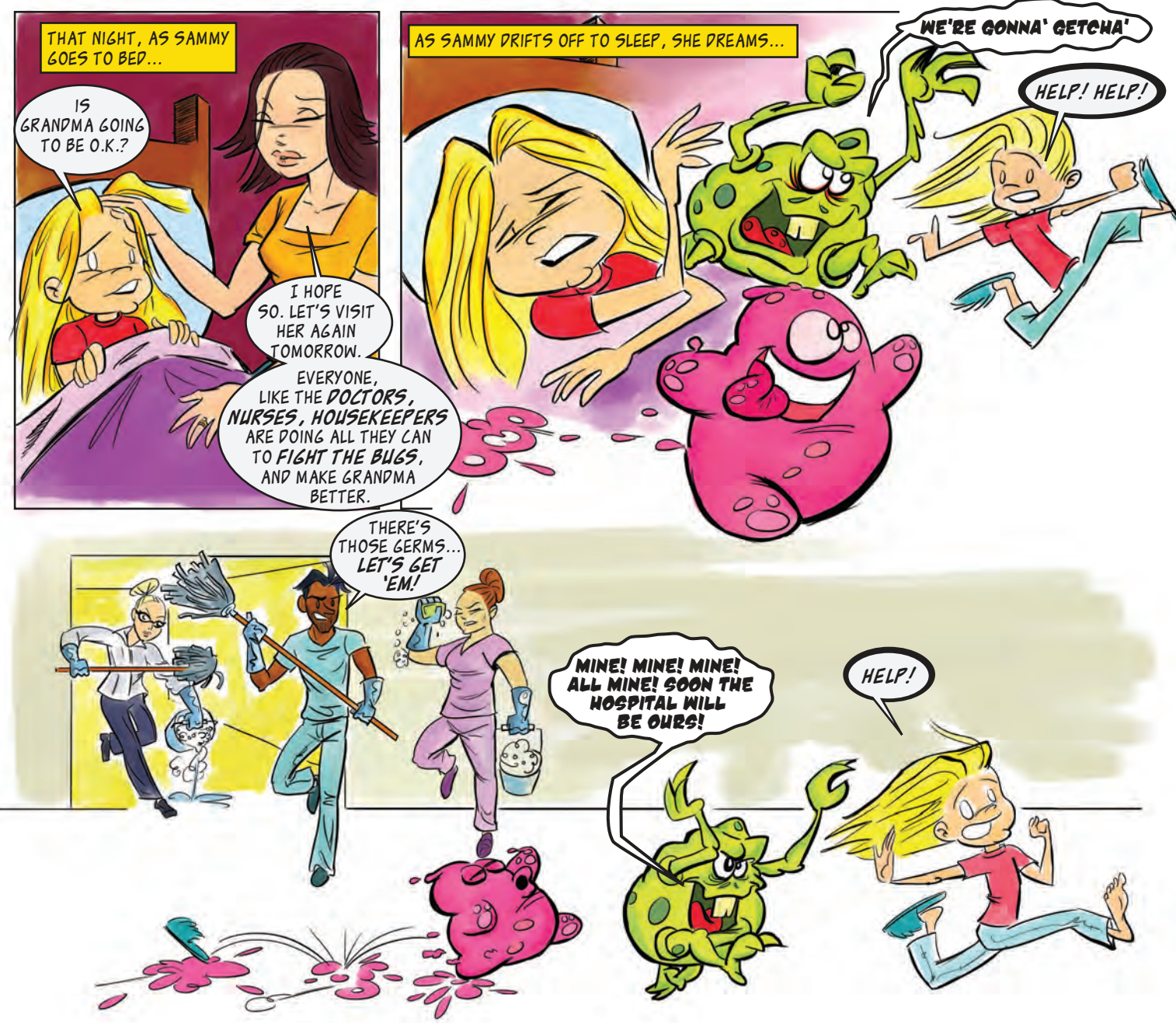
PAT YOUR HANDS DRY WITH PAPER TOWEL.



TURN TAPS OFF WITH THE PAPER TOWEL.



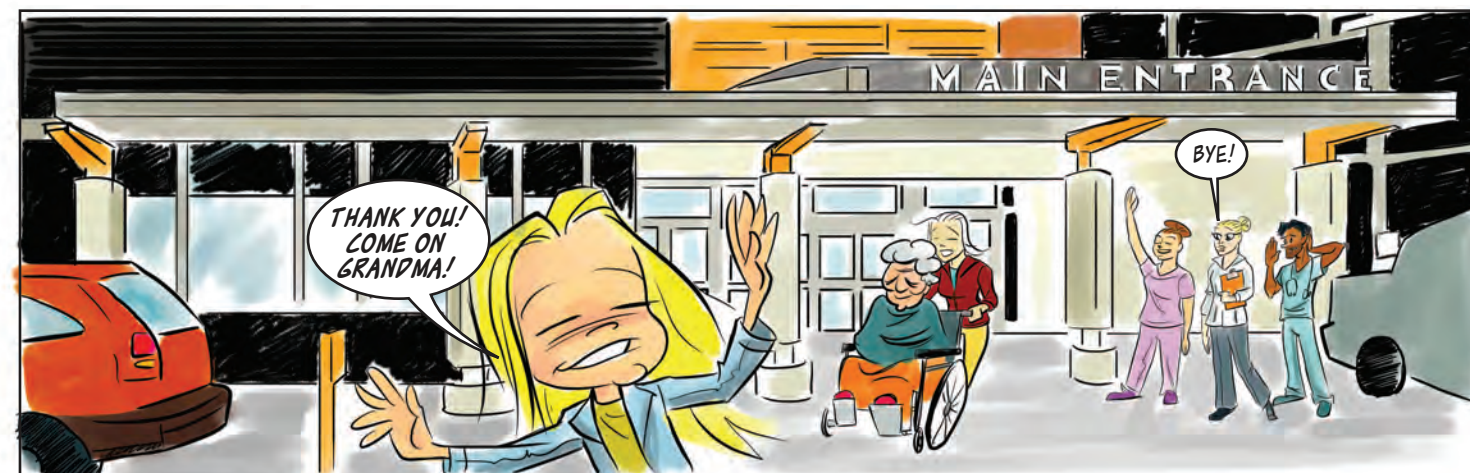
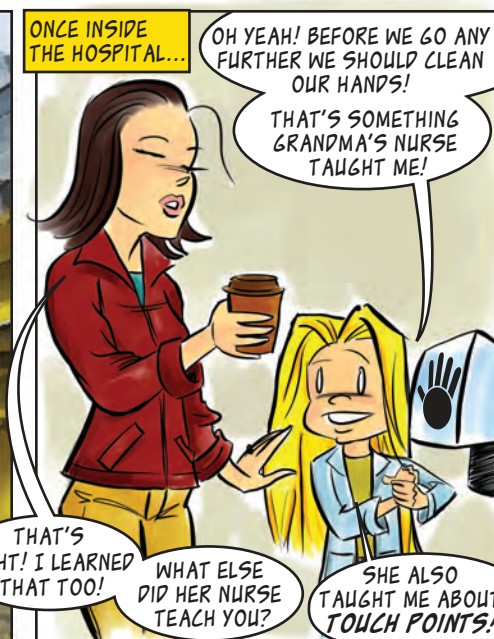
DISCARD THE PAPER TOWEL.



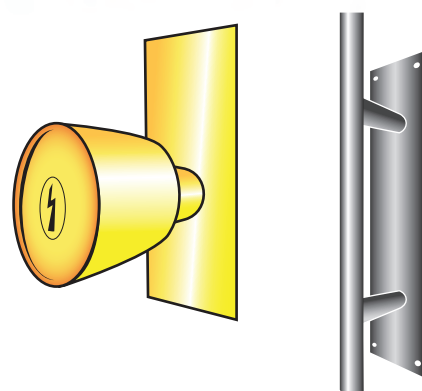
Clean your hands often



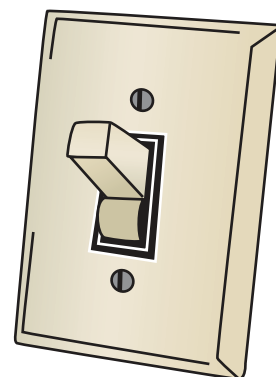
Help us stay scent and latex free



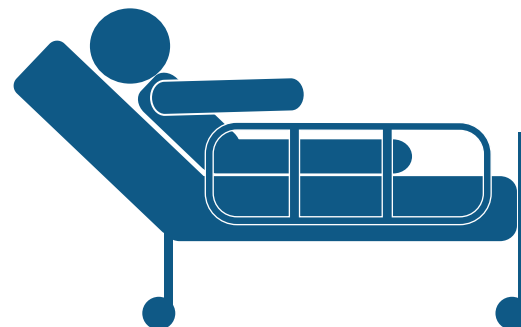
TOUCH POINTS ARE POSSIBLE WAYS AND PLACES GERMS CAN SPREAD. HERE ARE SOME EXAMPLES:



DOOR KNOBS AND HANDLES

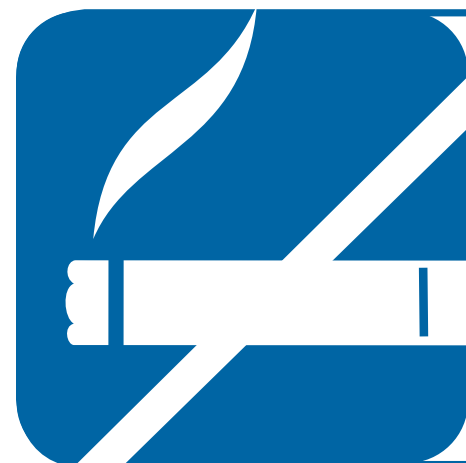


LIGHT SWITCHES



BED RAILINGS

THERE ARE MANY WAYS FOR GERMS TO SPREAD. AT THE HOSPITAL WE CLEAN THESE SURFACES OFTEN. YOU CAN MINIMIZE AND ELIMINATE THE HARM BY WASHING HANDS REGULARLY.

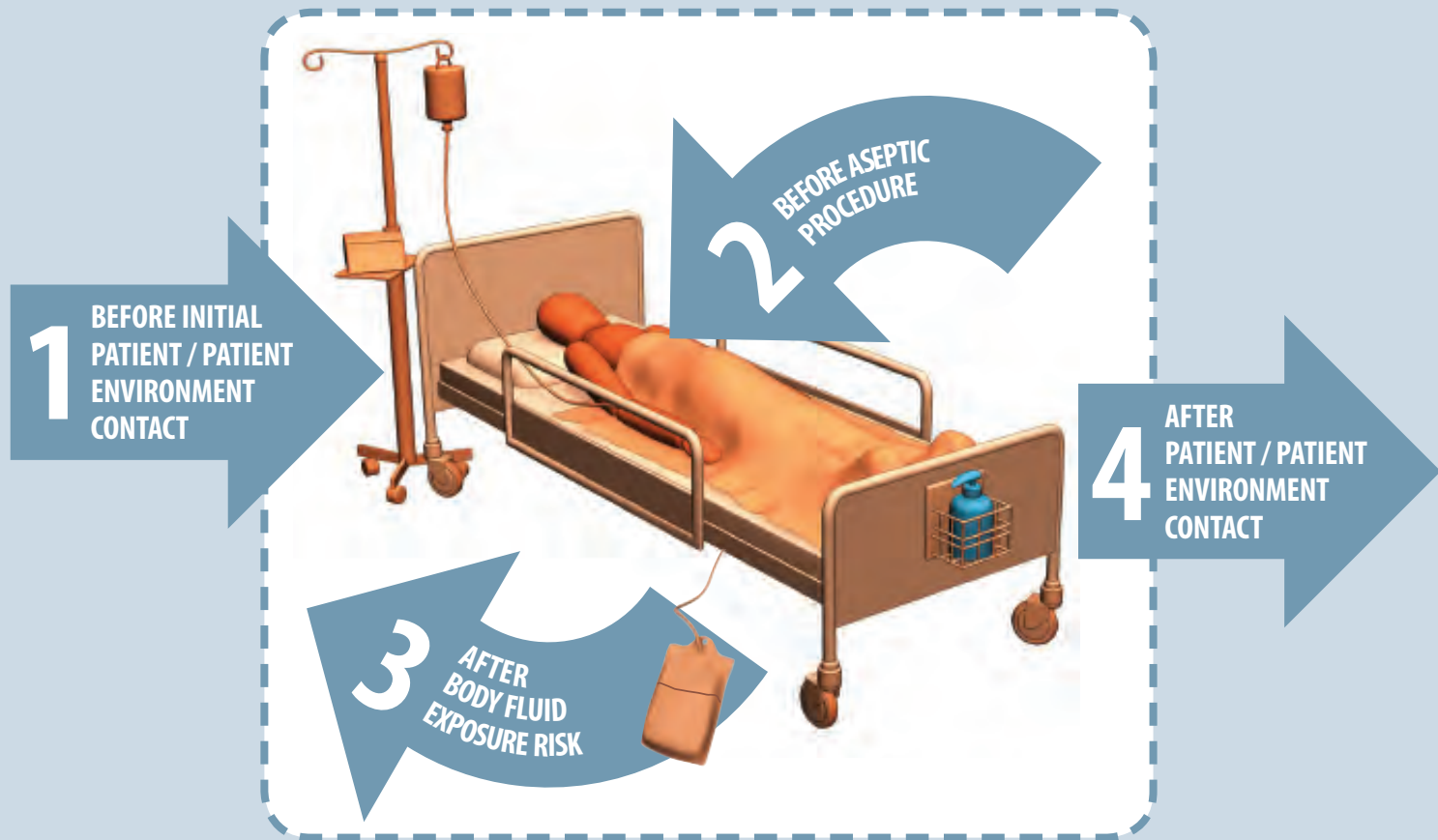


No smoking anywhere
on hospital property



TO BE CONTINUED???

Your 4 Moments for Hand Hygiene



1	BEFORE initial patient / patient environment contact	<p>WHEN? Clean your hands when entering:</p> <ul style="list-style-type: none"> • before touching patient or • before touching any object or furniture in the patient's environment <p>WHY? To protect the patient/patient environment from harmful germs carried on your hands</p>
2	BEFORE aseptic procedure	<p>WHEN? Clean your hands immediately before any aseptic procedure</p> <p>WHY? To protect the patient against harmful germs, including the patient's own germs, entering his or her body</p>
3	AFTER body fluid exposure risk	<p>WHEN? Clean your hands immediately after an exposure risk to body fluids (and after glove removal)</p> <p>WHY? To protect yourself and the health care environment from harmful patient germs</p>
4	AFTER patient / patient environment contact	<p>WHEN? Clean your hands when leaving:</p> <ul style="list-style-type: none"> • after touching patient or • after touching any object or furniture in the patient's environment <p>WHY? To protect yourself and the health care environment from harmful patient germs</p>

Adapted from WHO poster "Your 5 moments for Hand Hygiene", 2006.